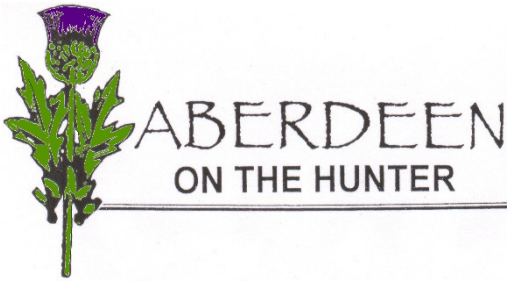


PLEASE PRINT ME OUT TO READ



UPPER HUNTER MUSEUM OF RURAL LIFE Inc.  
**NEWSLETTER**  
November, 2013

---

---

***Aberdeen is Looking Spectacular with the Jacaranda's in Full Bloom***

**REMEMBRANCE DAY**

Also known as **ARMISTICE DAY** and **POPPY DAY**

Remembrance Day commemorates the armistice that ended World War I on 11<sup>th</sup> November, 1918 for which we observe one minute silence at 11 am. The Governor General issued a Proclamation Declaration as recently as 1997!

More than 60,000 Australians died and many more thousands were wounded and permanently disabled. It was known as "the war to end all wars."

The red remembrance poppy has become a familiar emblem of Remembrance Day due to the poem "In Flanders Fields". These poppies bloomed across some of the worst battlefields of Flanders in World War I, their brilliant red colour an appropriate symbol for the blood spilled in the war.



This is Pierce Clark who enlisted in 1916 and volunteered again in 1940.

The World War I Honor Roll of Aberdeen contains 52 names, including one woman. Six young men did not return to their families.

*\*Photo and information from Anne Van Wienen's "A Pictorial History of Aberdeen NSW".*

---

**TIDY TOWNS**

CONGRATULATIONS to all concerned – Aberdeen placed second in the overall town category for populations between 1201 and 4000.

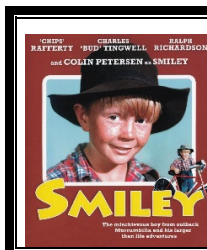
**BLUE MOUNTAINS BUSH FIRES**

From the Hunter Valley News, 6<sup>th</sup> November, 2013.

*Aberdeen's deputy captain Derrick Wicks told the Hunter Valley News: "We got a text to get a crew ready for the Blue Mountains. This was a first for the Aberdeen Fire Station. We haven't been in a task force before, and this is the furthest we have travelled. It is all thanks to the Fire Rescue NSW tanker that is a valued vehicle in the Aberdeen brigade's fleet. Able to make its way through rougher terrain than standard tankers, it was called into action to assist. There aren't really any four-wheel-drive trucks in the Upper Hunter, so we feel it is a great asset."*

Our **AGM** will be held on **Wednesday, 20<sup>th</sup> November at 5.00pm in the Aberdeen Library**. Your attendance would be much appreciated.

All positions will be declared vacant and we will be particularly looking for a Treasurer.



Our next **MOVIE** will be held on **Tuesday, 10<sup>th</sup> December**. Doors open at 11.30am. Please book with Jan on 65437150 or Jan on 65425168.

The movie is **SMILEY** – a mischievous boy who lives in the small country town of Murrumbilla.

---

President – Dianne Walmsley 6543 6269, Secretary – Jan Wild 6542 5168, Vice President – Carol Ray 6545 2761  
Treasurer – Jan Sumner 6543 7150,

Newsletter – Anneta Vaughan 6543 7127 Email: fleetwood@reset.net.au  
PO Box 140, Aberdeen. NSW. 2336, Web: aberdeenmuseum.org.au

# BRIDGES OF ABERDEEN

## FITZGERALD BRIDGE OVER THE HUNTER RIVER

Most of us will be aware of the new bridge being built over the Hunter River in Aberdeen, funded by the Australian Government. It will be permanently used for two way traffic, providing for a single lane of traffic in each direction and replaces a bridge which was built in 1986 which is to be demolished. An average of 8,500 vehicles use the crossing daily.

The existing metal lattice truss southbound heritage bridge, built in 1893 will be retained for pedestrians and cyclists.

A new concrete pathway will be provided under the bridges to link the western side of the bridges to the old southbound bridge for pedestrian and cyclist access.

*The photos below were taken by Denise Bell.*



28th June, 2013



21st August, 2013



2nd October, 2013

## BROAD CROSSING OVER THE HUNTER RIVER

The new Broad Crossing Bridge on Glenbawn Road will be officially opened on 15<sup>th</sup> November. The original causeway collapsed in April, 2011 following a water release from Glenbawn Dam. Council has recycled most of the concrete from the old causeway as 'scour protection' saving \$15,000 in demolition costs. Parts of the original causeway next to the river were kept to create protected pools for wildlife such as frogs, fish, skinks, water dragons, turtles and platypus.

*The photos below were taken by Denise Bell*



15th June, 2011



28th July, 2013



25th August, 2013

## HALCOMBE HILL REALIGNMENT OVER RAILWAY LINE

Following several major crashes, this section of the New England Highway was realigned involving a new rail overbridge over the main north railway. This work was commenced in June 2006 and was completed in 2007.



## RAILWAY BRIDGE OVER HUNTER RIVER



An Iron Lattice Girder Railway Bridge was built north of Aberdeen station in 1871 and demolished in 1982.

On the night of 10 June 1926, five people died and thirteen were injured when the Brisbane express train, hauled by two engines, fell through a timber bridge.